

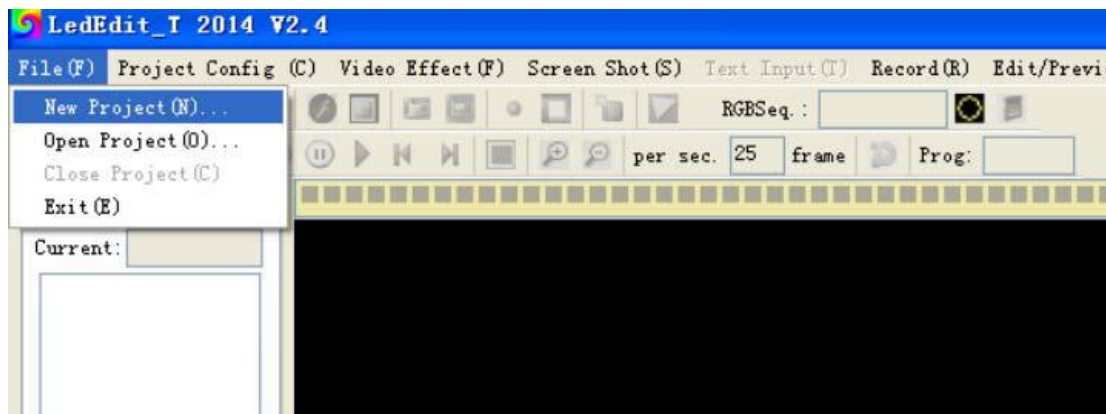
ShenZhen Future Lighting CO.,Ltd

Address: Block 3 huafeng zhenbao industry park,beihuan road,shiyang town,baoan ,Shenzhen,China.

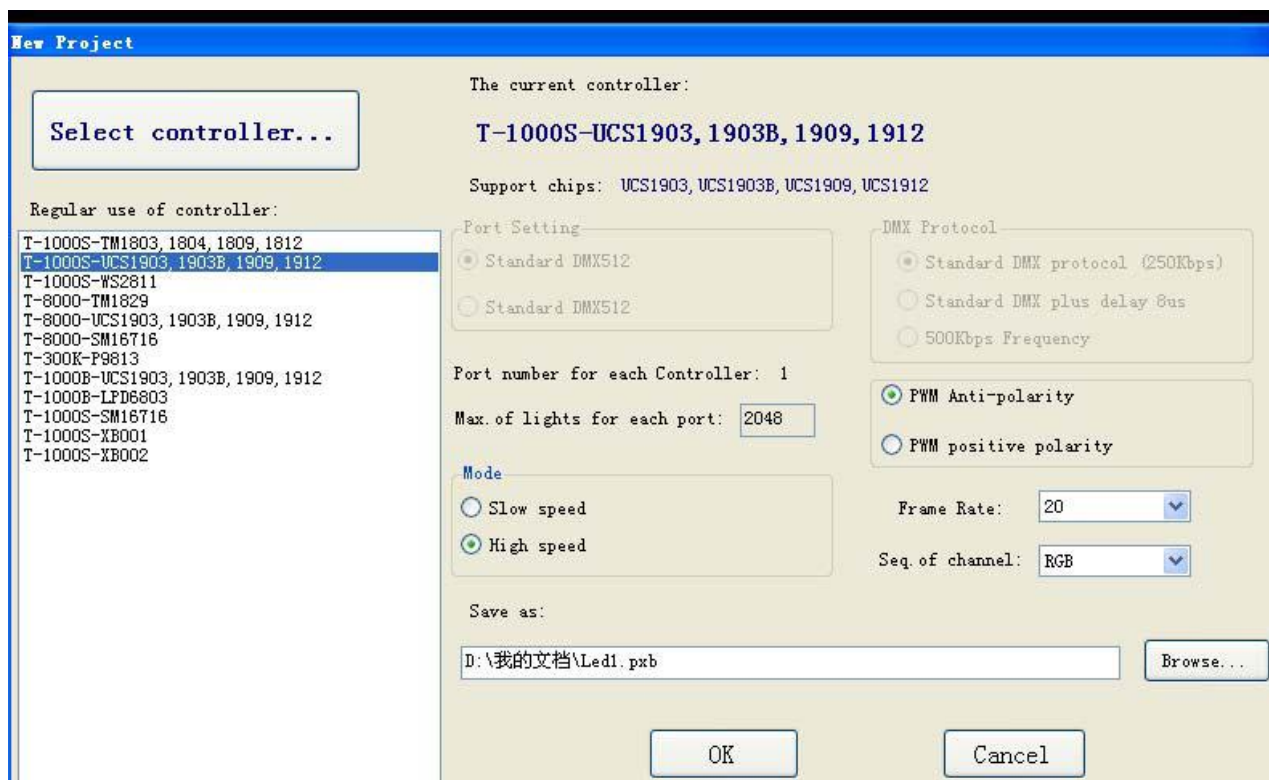
Contact person:king Tel: 18666472988 wechat:18666472988

## How to do program in LedEdit 2014\_V2.4

1. Open the software LedEdit, then New Project(N);



2. Choose Controller Type, If you use the controller T-1000S, and you control chip of light is UCS1903, You can choose T-1000S- UCS1903. ( **T-1000S-IC model** )



**Focus on LED Controller**

Contact person:king Tel: 18666472988 wechat:18666472988

# ShenZhen Future Lighting CO.,Ltd

Address: Block 3 huafeng zhenbao industry park, beihuan road, shiyan town, baoan ,Shenzhen, China.

Contact person: king Tel: 18666472988 wechat: 18666472988

---

## T-1000S support chips:

Chip type	Software code&Controller type	Lamps/(MAX)	Note
TM1803, TM1804, TM1809, TM1812	T-1000S-TM1803	2048pixels	With high speed and low speed
TM1829	T-1000S-TM1829	2048pixels	With high speed and low speed
UCS1903, UCS1903B , UCS1909, UCS1912	T-1000S-UCS1903	2048pixels	With high speed and low speed
UCS2903, UCS2909, UCS2912	T-1000S-UCS2903	2048pixels	With high speed and low speed
UCS3903	T-1000S-UCS1024	2048pixels	
UCS6909, UCS6912, UCS7009, UCS5903	T-1000S-UCS6909	2048pixels	
TA9909	T-1000S-TA9909	2048pixels	With high speed and low speed
MBI6021	T-1000S-MBI6021	2048pixels	
P9813	T-1000S-P9813	2048pixels	
WS2811	T-1000S-WS2811	2048pixels	With high speed and low speed
INK1003	T-1000S-INK1003	2048pixels	With high speed and low speed
TLS3100	T-1000S-TLS3100	2048pixels	With high speed and low speed
SM16711	T-1000S-SM16711	2048pixels	With high speed and low speed
SM16716	T-1000S-SM16716	2048pixels	
SM16726	T-1000S-SM16726	2048pixels	
LPD6803, D705, 1101	T-1000S-6803	2048pixels	
LPD8806, LPD8809	T-1000S-8806	2048pixels	
LPD1882, LPD1889	T-1000S-1882	2048pixels	With high speed and low speed
LPD6812	T-1000S-6812	2048pixels	With high speed and low speed
LPD6813	T-1000S-6813	2048pixels	
TM1903, TM1904, TM1909, TM1912	T-1000S-TM1903	2048pixels	With high speed and low speed
WS2801, WS2803	T-1000S-WS2801	2048pixels	
D7710, D7720	T-1000S-D7710	2048pixels	

## T-4000 and T-8000 support chips:

Chip type	Software code&Controller type	Lamps/(MAX)	Note
TM1803, TM1804, TM1809, TM1812	T-8000-TM1803	8192 pixels	With high speed and low speed
TM1829	T-8000-TM1829	8192 pixels	With high speed and low speed
UCS1903, UCS1903B , UCS1909, UCS1912	T-8000-UCS1903	8192 pixels	With high speed and low speed

### Focus on LED Controller

Contact person: king Tel: 18666472988 wechat: 18666472988

---

# ShenZhen Future Lighting CO.,Ltd

Address: Block 3 huafeng zhenbao industry park,beihuan road,shiyao town,baoan ,Shenzhen,China.

Contact person:king Tel: 18666472988 wechat:18666472988

UCS2903,UCS2909,UCS2912,	T-8000-UCS2903	8192 pixels	With high speed and low speed
UCS3903	T-8000-UCS1024	8192 pixels	
UCS6909 , UCS6912 , UCS7009, UCS5903	T-8000-UCS6909	8192 pixels	
TA9909	T-8000-TA9909	8192 pixels	With high speed and low speed
MBI6021	T-8000-MBI6021	8192 pixels	
WS2811	T-8000-WS2811	8192 pixels	With high speed and low speed
INK1003	T-8000-INK1003	8192 pixels	With high speed and low speed
TLS3100	T-8000-TLS3100	8192 pixels	With high speed and low speed
SM16711	T-8000-SM16711	8192 pixels	With high speed and low speed
SM16716	T-8000-SM16716	8192 pixels	
SM16726	T-8000-SM16726	8192 pixels	
LPD8806,LPD8809	T-8000-8806	8192 pixels	
LPD1882,LPD1889	T-8000-1882	8192 pixels	With high speed and low speed
LPD6812	T-8000-6812	8192 pixels	With high speed and low speed
LPD6813	T-8000-6813	8192 pixels	
P9813	T-8000-P9813	8192 pixels	
DMX512	T-8000-DMX	1360/4096 pixels	Compatible with standard DMX512 protocol

## Focus on LED Controller

Contact person:king Tel: 18666472988 wechat:18666472988

# ShenZhen Future Lighting CO.,Ltd

Address: Block 3 huafeng zhenbao industry park,beihuan road,shiyuan town,baoan ,Shenzhen,China.

Contact person:king Tel: 18666472988 wechat:18666472988

TM1903, TM1904, TM1909, TM1912	T-8000-TM1903	8192 pixels	With high speed and low speed
WS2801,WS2803	T-8000-WS2801	8192 pixels	
DS189	T-8000-DS189	8192 pixels	
TLS3001,TLS3008	T-8000-TLS3001	8192 pixels	
APA102	T-8000-APA102	8192 pixels	
BS0815	T-8000-0815	8192 pixels	
GW6203	T-8000-GW6203	8192 pixels	
BS0825	T-8000-0825	8192 pixels	
BS0901	T-8000-0901	8192 pixels	

Save as:

d:\My Documents\Led1.pxb

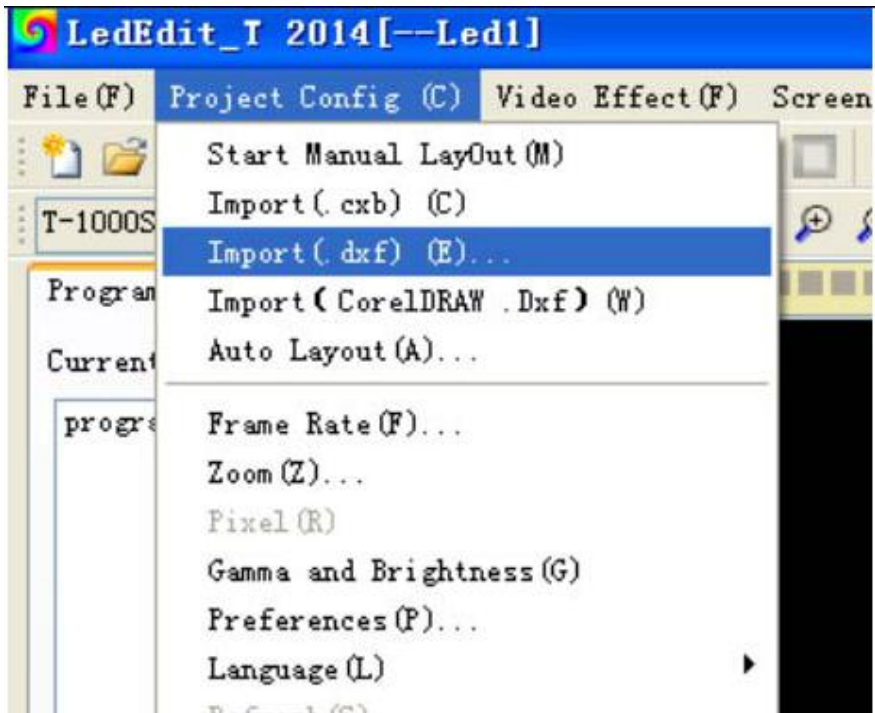
Browse

Save as,you can set the save path;

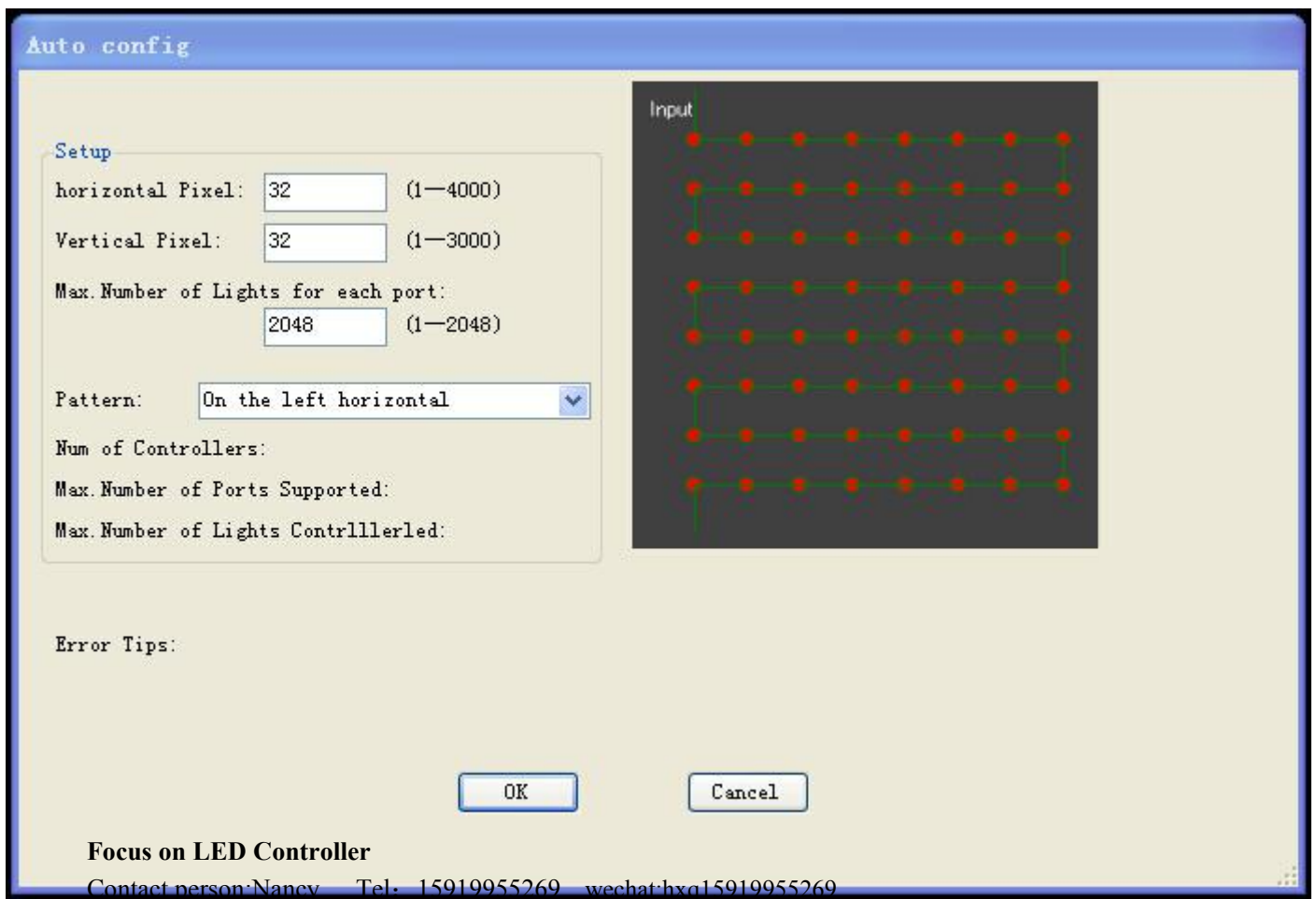
### 3.Import connection diagram or Auto Layout

#### Focus on LED Controller

Contact person:king Tel: 18666472988 wechat:18666472988



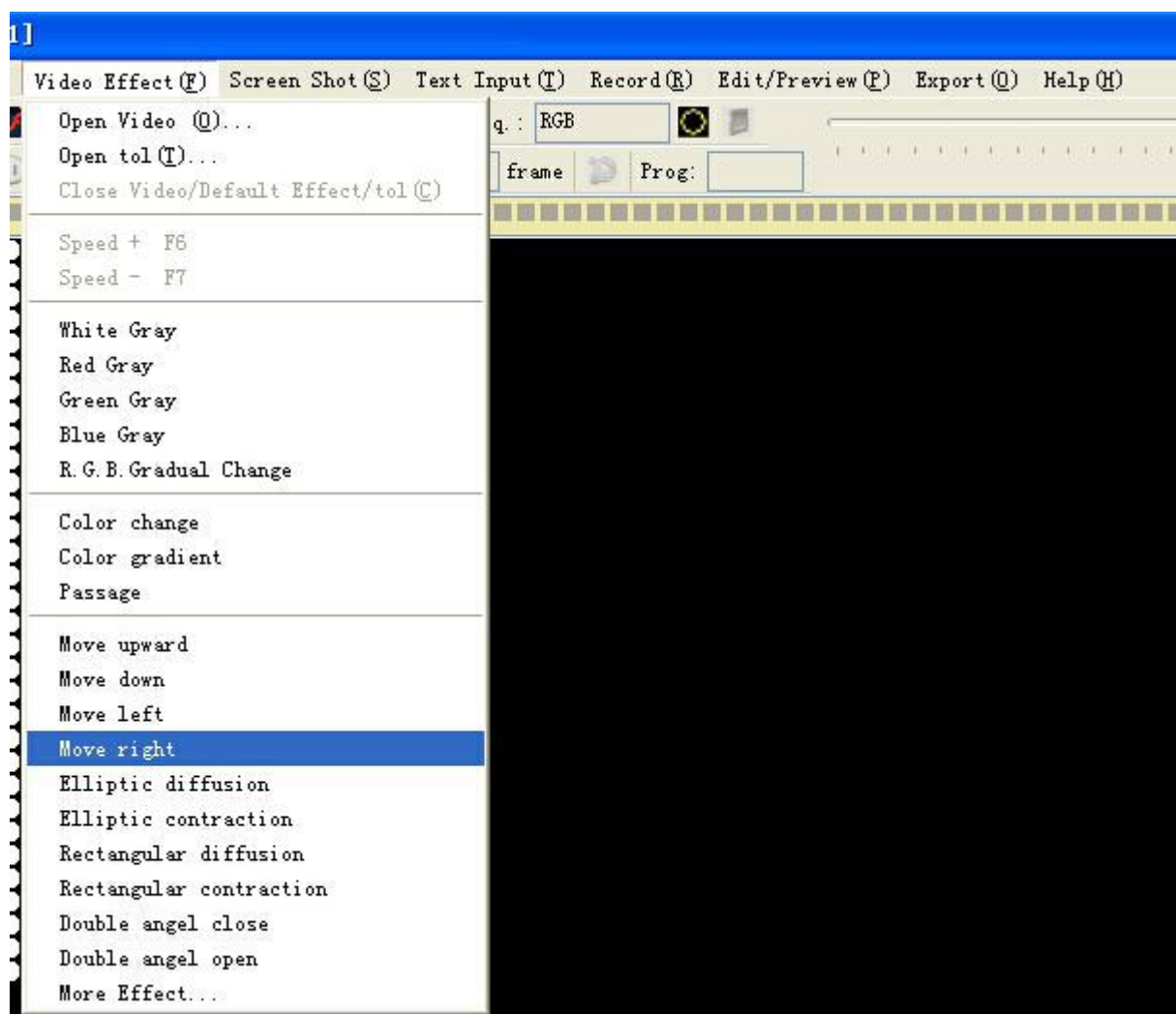
If you choose Auto Layout



---

You can choose horizontal pixel, Vertical pixel, Pattern, you can change by yourself. If you use T-1000, the Max Number of Lights for each port is 2048, if you use T-4000 or T-8000, the Max. Number is 1024.

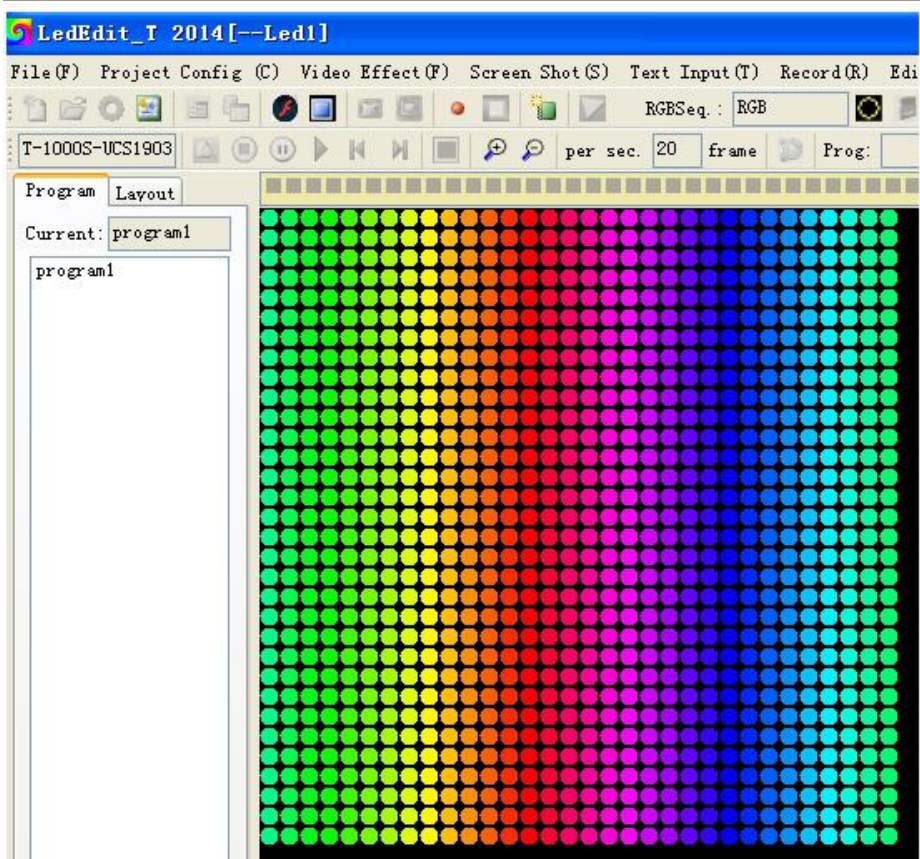
#### 4. Video Effect:



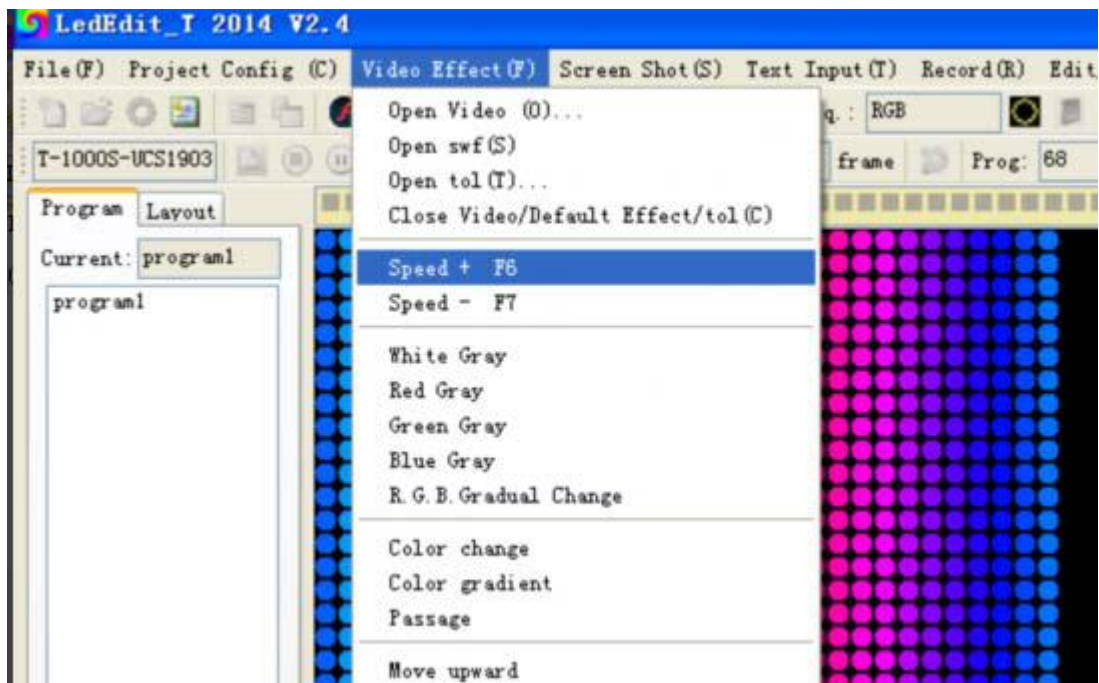
There are some effects in the software, such as Move upward, Move down, Move left...and so on, and you can open Video or tol files in your computer. For example, I choose move right, the leds can play like this

---

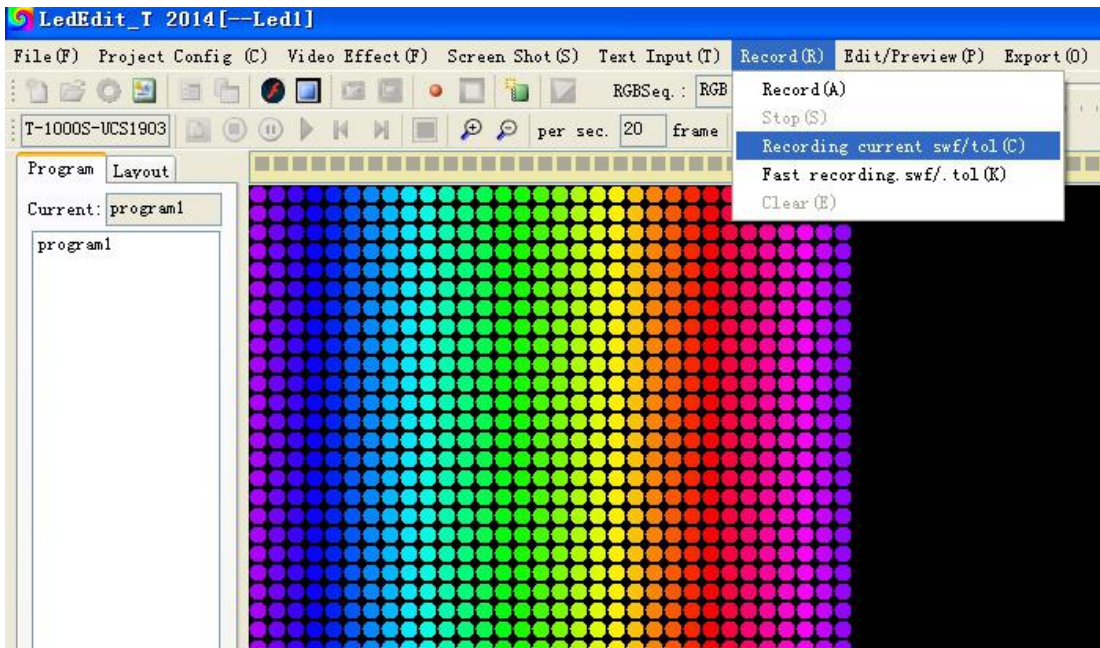




We can choose the speed of the effect. Then Recording current swf/tol

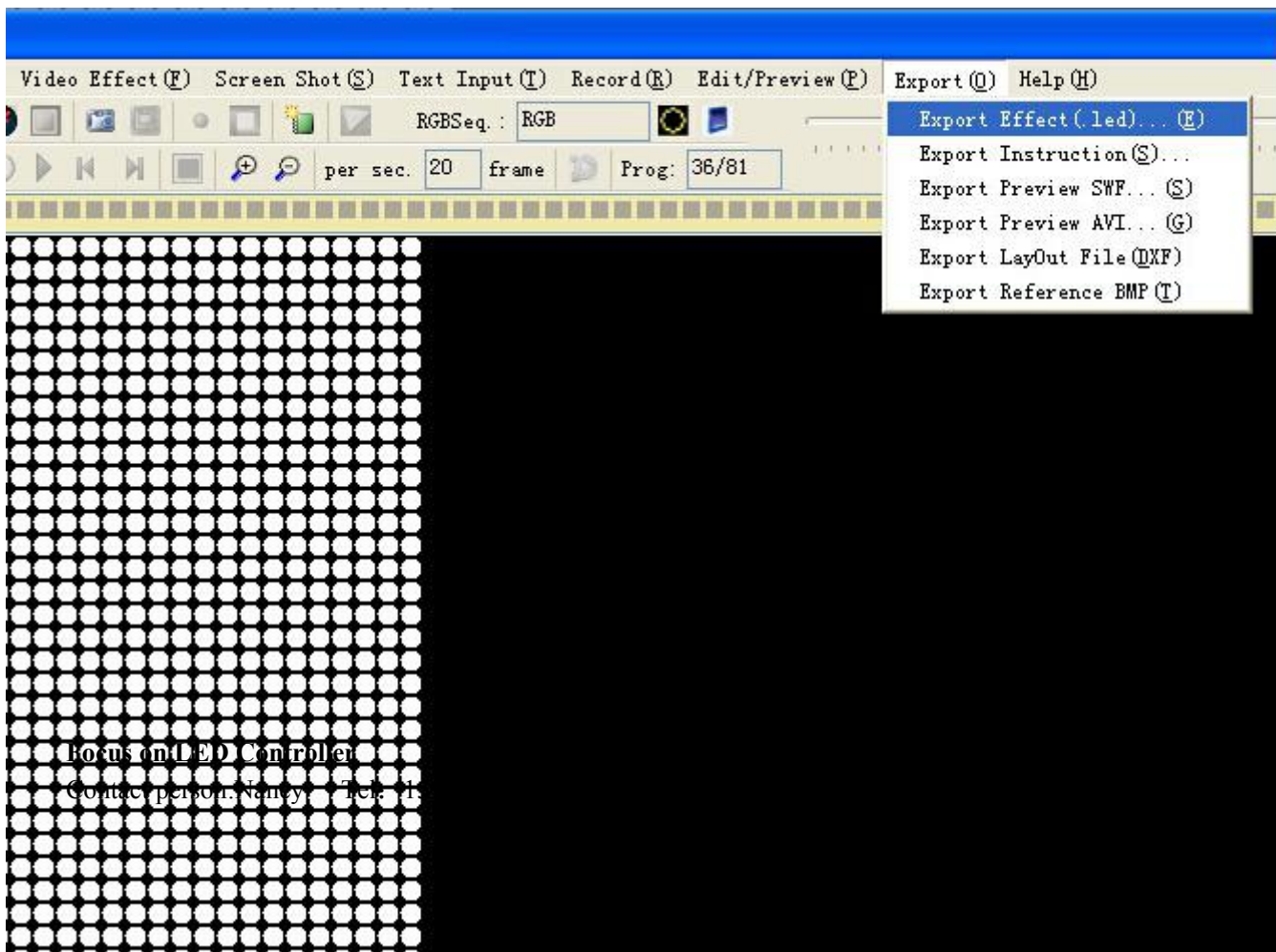


Then record the current swf/tol,

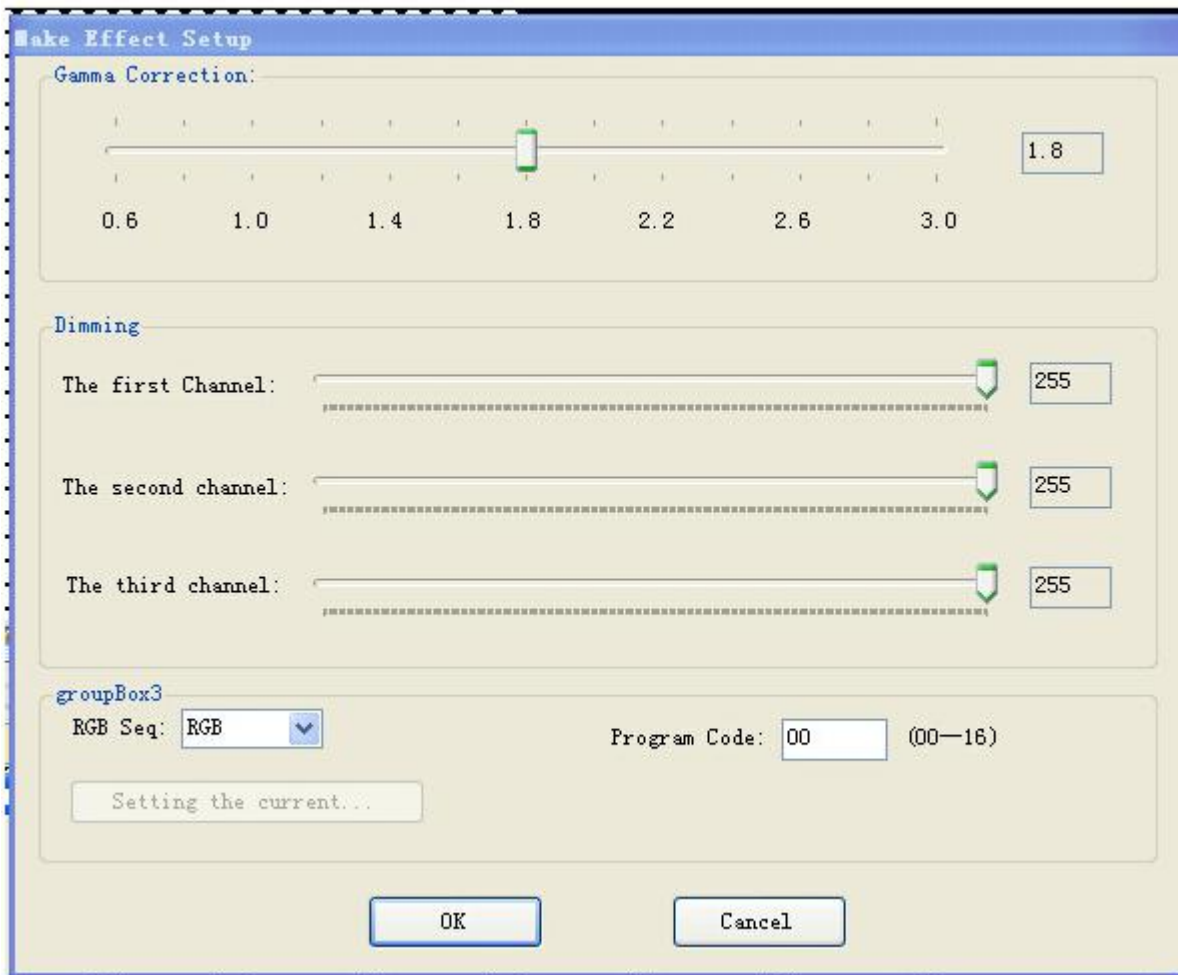


You can select several effects to record. Then your leds can change according to the effects you record.

#### 5. Close Video Effect and Export







Press OK, then you can get a program in the address you set.



this is the program file.

Copy this file to SD card, then put the SD card to the controller, we can see the effect.

## 6、 Name of the program: (The rule of how to name the programs: )

The name for NO.1 controller:

- “00\_program1.led” ----- NO.1 program for No.1 controller
- “01\_program11.led” ----- NO.2 program for No.1 controller
- “02\_program11.led” ----- NO.3 program for No.1 controller

.....

“15\_program11.led” ----- NO.16 program for No.1 controller

**The name for NO.2 controller:**

“00\_program12.led” ----- NO.1 program for No.2 controller

“01\_program12.led” ----- NO.2 program for No.2 controller

“02\_program12.led” ----- NO.3 program for No.2 controller

.....

“15\_program12.led” ----- NO.16program for No.2 controller

One controller store a maximum of 16 programs, copy multiple files to the SD card in order, after formatting the SD card as “FAT” format.

---